

SKF SNH plummer block solution

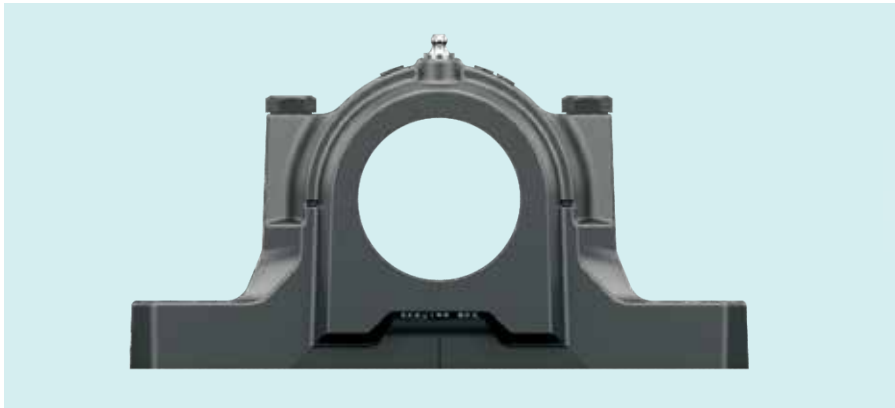


RIGHT
PRODUCT

RIGHT
PRICE

RIGHT
TIME

SKF SNH housings



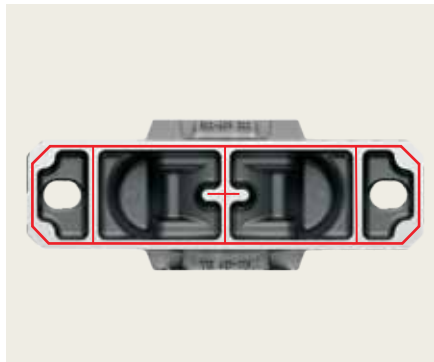
Water based black paint

Corrosion resistance and reduced environmental impact



Simple mounting and dismantling

To simplify mounting and make alignment more accurate, lines indicating the centre of the bearing seat and housing bore axis are cast into the housing base. Dimples indicate the position for dowel pins.



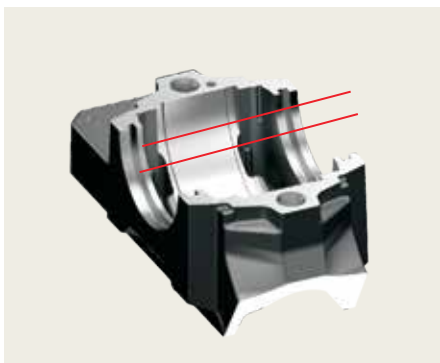
Effective heat dissipation

Additional ribs on the base of the housing increase the contact area improving heat dissipation.



Improved markings on the housings

The housing cap and base are individually marked. The serial number of both the parts helps avoid mismatching. The designation on the housing cap is easily readable.



Grease level marking

Markings at each corner inside the housing base indicate the proper grease level for an initial 20% or 40% fill of the free space between housing and bearing.



Dimples to locate accessories and improved lubrication facilities

Dimples cast into the housing cap indicate where grease fittings and condition monitoring sensors can be mounted for maximum effectiveness.



Robust design and optimised support for bearing high material grade

High material grade (FG 260) with additional ribs in the base makes SKF SNH housing more robust and stiffer.

Accessories – Adapter sleeve

Adapter sleeve – easy mounting and dismounting of bearings

Since machining a tapered shaft is costly, split sleeves having a tapered outside surface and cylindrical bore are used to fit bearings having a tapered bore to a cylindrical shaft in order to achieve the desired level of interference.

Not only can sleeves be used with considerable advantage for locating rolling bearings with tapered bores on cylindrical seatings, but the use of sleeves for mounting bearings also eliminates the need for close shaft tolerances.

Adapter sleeves are manufactured with a taper of 1:12 on the outer diameter while the bore is cylindrical. This permits the use of commercially machined shafts.

Mounting and dismounting large bearings on adapter sleeves can be carried out effectively with the use of a hydraulic nut and oil injection equipment.

Compliance to standards

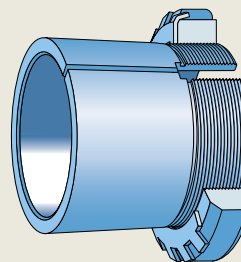
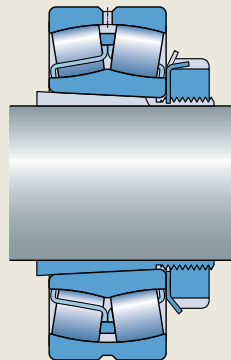
The dimensions of the adapter sleeve conforms to ISO 2982-1.

Features and benefits

- Precision manufacture (roundness, taper angle, straightness, surface finish, wall thickness and threads) facilitates accurate mounting and reliable bearing operation
- Optimised running performance allows for high speeds and minimised vibrations
- High quality material reduces fretting corrosion and provides strength
- A thin slot allows for improved load contact with the bearing



On a plain shaft



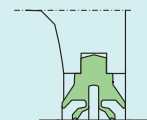
Accessories – Four-lip seal



With shaft speeds continuously increasing, there was a need for a sealing solution that could accommodate higher speeds with the same high level of performance that the SKF Four-lip seal could provide at lower speeds.

To meet that need, SKF developed a robust, easy-to-mount four-lip seal that can accommodate peripheral speeds up to 13 m/s. This four-lip seal is made from a specially formulated thermoplastic elastomer. It is manufactured using a unique process that improves the finish of the contact surfaces so that there is less friction and heat generated by the seal.

Other standard SKF seals can also be used with these SNH housings and can be ordered separately.



Four-lip seal

Application conditions

Temperature [°C (°F)]

TSN .. L

–40 to +100
(–40 to +210)

Max circumferential speed [m/s]

13

Max misalignment

0,5 to 1°

Grease relubrication*

Oil lubrication

Low friction

Axial shaft displacement

Vertical arrangement

Replacement

Sealing suitability

Dust

Fine particles

Coarse particles

Chips

Liquids when sprayed

Direct sunlight

■ Very suitable ■ Suitable ■ Limited suitability ■ Unsuitable

*Application specific SKF lubricants are also available. For technical details and lubricant selection, please contact your local SKF Authorised distributor.





SKF Explorer spherical roller bearings

What if a bearing was so good, it could last twice as long as the one it replaces?

So good that it could reduce energy costs, cut lubricant use, and even allow you to run your machinery faster and cooler? The benefits to your operation would far outweigh the cost of these bearings.

SKF Explorer spherical roller bearings are just that good, delivering twice the life of original SKF Explorer bearings under contaminated and poor lubrication conditions.

Additionally, sealed SKF Explorer spherical roller bearings can be considered lubricated for the life of the bearing in many applications.

By eliminating or extending relubrication intervals, these bearings can significantly reduce the cost to purchase, apply and dispose of grease.



Reduced
downtime and
maintenance
costs



Increased
efficiency and
reliability



Common industries

- Material handling
- Quarry
- Mining
- Cement
- Sugar
- Agriculture

Range of SKF SNH housings

Range	From	To
Shaft Dia	25	160
Size range	SNH 507	SNH 532

Range of SKF Four-lip seal

Range	From	To
Shaft Dia	25	175
Size range	TSN 507 L	TSN 532 L

Range of SKF Adapter sleeves

Range	From	To
Shaft Dia	25	140

Complete range of sleeves to suit are available.

For technical and details about ordering the SKF SNH Plummer Block housing and accessories, please contact your local SKF Authorised distributor.

skf.com.au

® SKF is a registered trademark of the SKF Group.

© SKF Group 2017

The contents of this publication are the copyright of the publisher and may not be reproduced (even extracts) unless prior written permission is granted. Every care has been taken to ensure the accuracy of the information contained in this publication but no liability can be accepted for any loss or damage whether direct, indirect or consequential arising out of the use of the information contained herein.

PUB BU/P2 17777 EN • December 2017

Certain image(s) used under license from Shutterstock.com.